

Grain Cloud

Grain App

INSTRUCTION

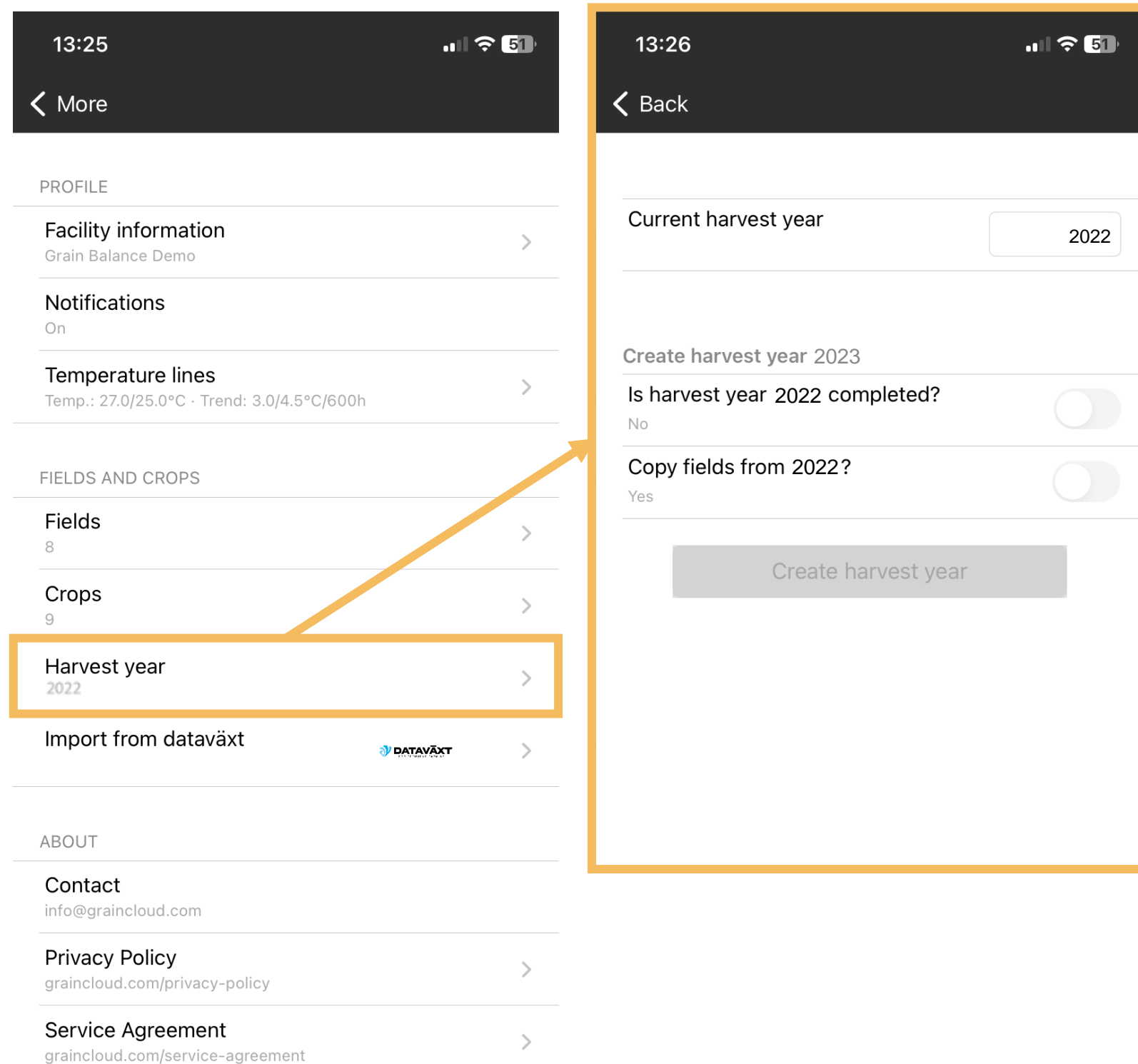
Change harvest year

Grain Cloud

Change harvest year

Available from 15 June each year.

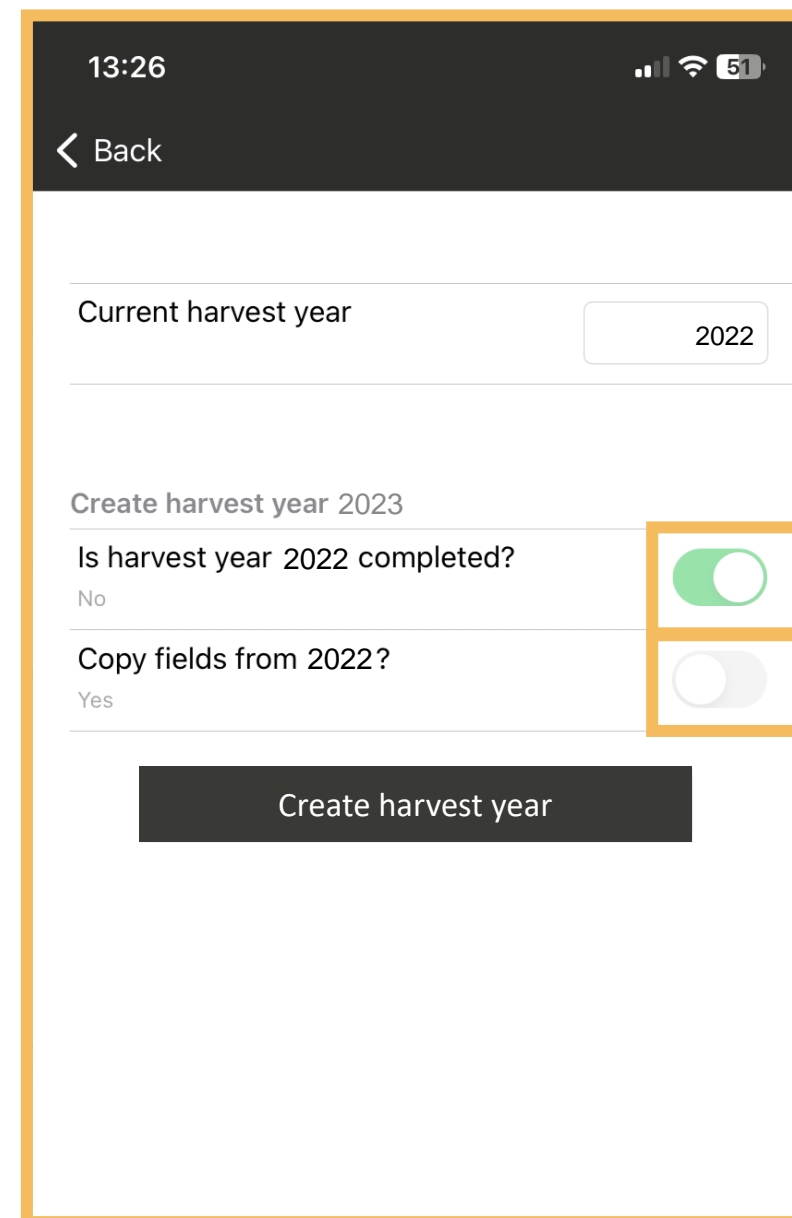
Change harvest year



INSTRUCTION

1. Click on Settings in Grain App.
2. Click on Harvest year.

Change harvest year

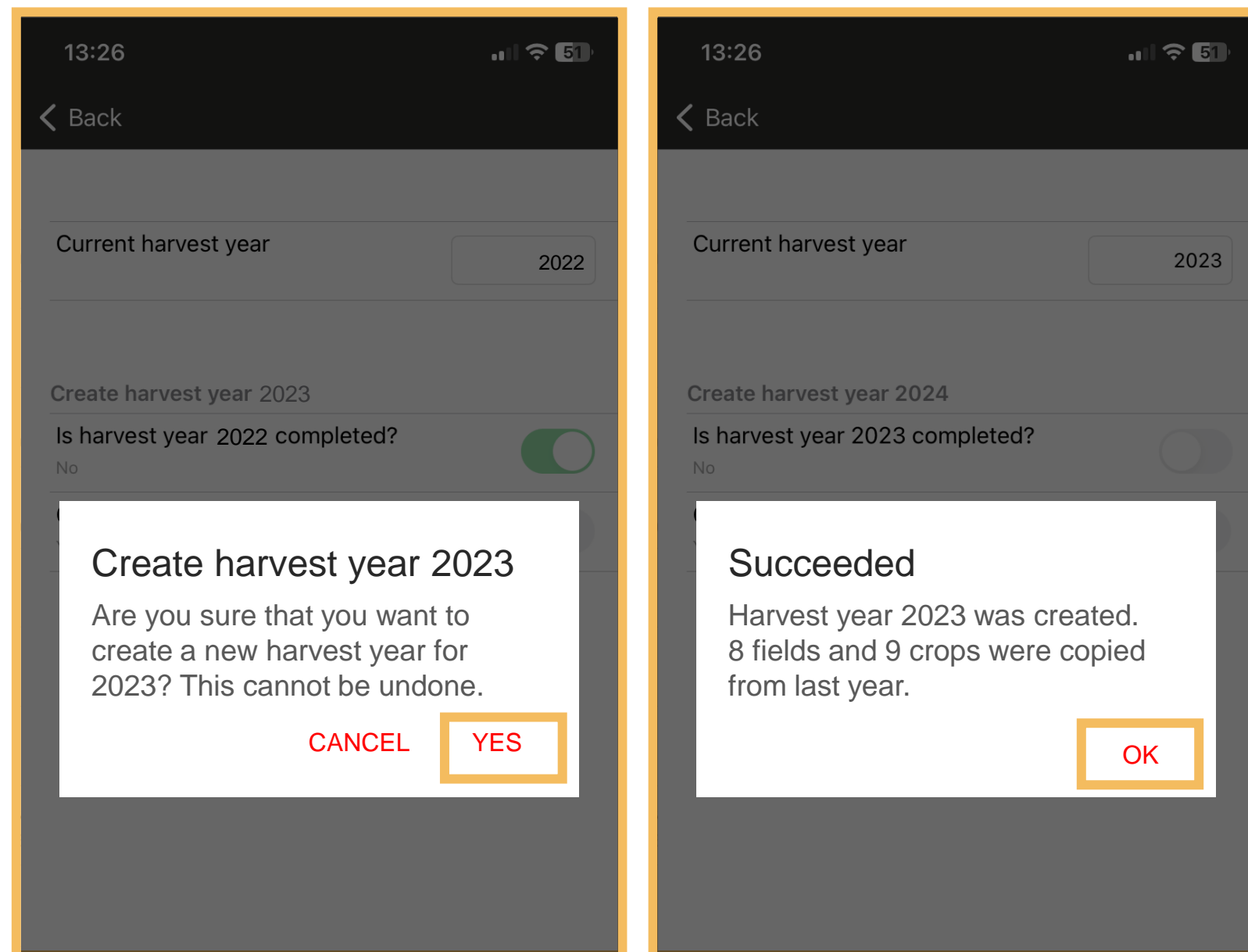


The screenshot shows a mobile application interface for changing the harvest year. At the top, the status bar displays the time 13:26, signal strength, Wi-Fi, and 51% battery. Below the status bar is a dark header with a white back arrow and the text "Back". The main content area is white and contains the following elements: a "Current harvest year" label with a text input field containing "2022"; a section header "Create harvest year 2023"; a question "Is harvest year 2022 completed?" with a green toggle switch turned on, and the word "No" below it; another question "Copy fields from 2022?" with a grey toggle switch turned off, and the word "Yes" below it; and a dark grey button with the text "Create harvest year" at the bottom.

INSTRUCTION

3. Tick Yes to the first question.
4. Tick Yes to the second question if you want to copy over the fields from the current harvest year to the new harvest year. This is optional to choose.

Change harvest year



INSTRUCTION

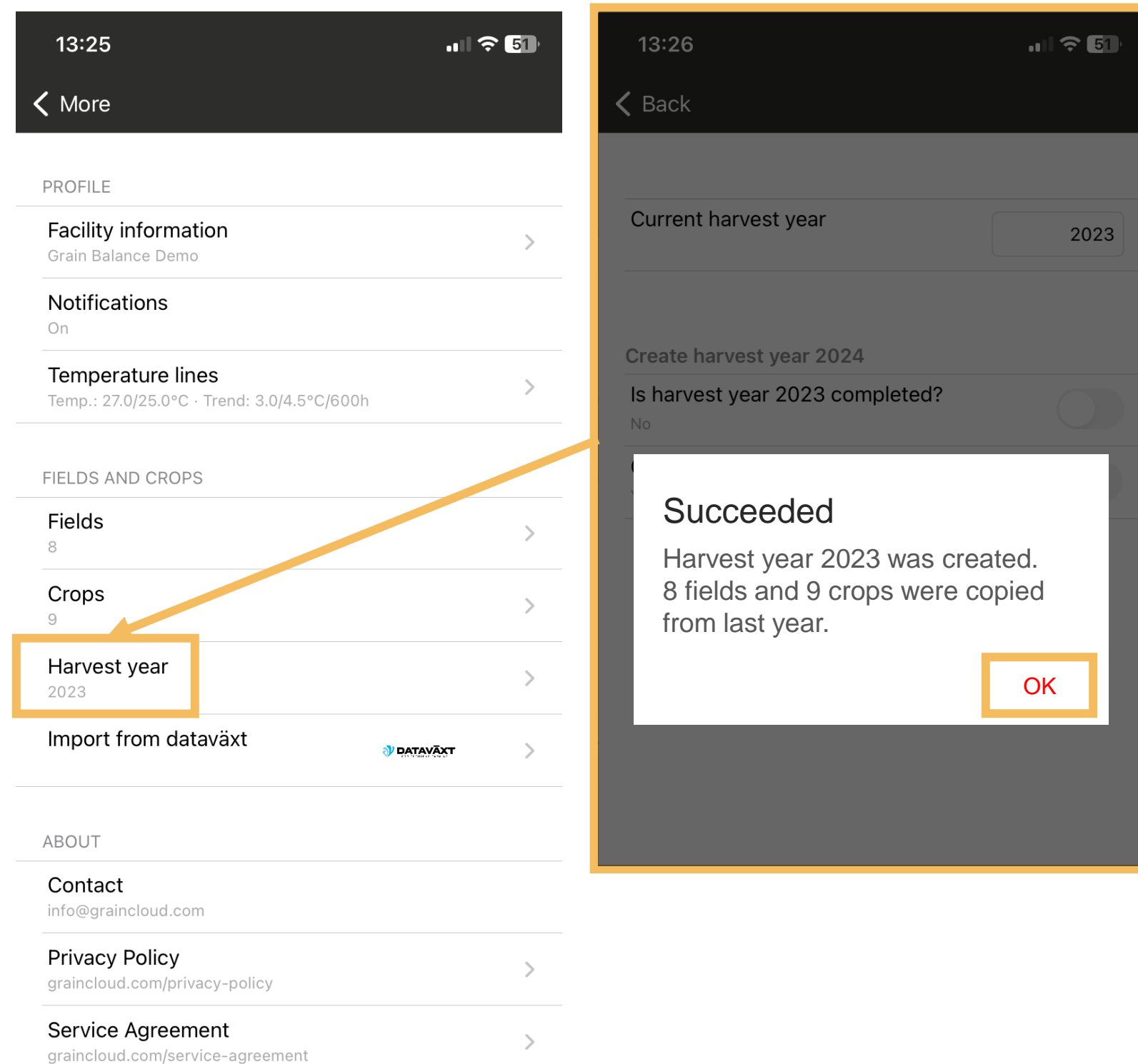
5. Click Yes to confirm that you want to switch to a new harvest year. Once you press Yes, there is no undoing!
6. A message is displayed when the change of harvest year is successful.

Note!

Once you have pressed Yes to the question whether you want to create a new harvest year, there is no undoing!

The image shows how it looks in the text if you did select Yes to copy fields from the current harvest year to the new harvest year.

Change harvest year



INSTRUCTION

7. The new harvest year is displayed under Settings.

BEST OF LUCK!

For further questions regarding the instructions or about Grain Cloud please contact us

info@graincloud.com

+46 512 79 70 00



Grain
Cloud