

# GRAIN APP GENERAL

Change harvest year

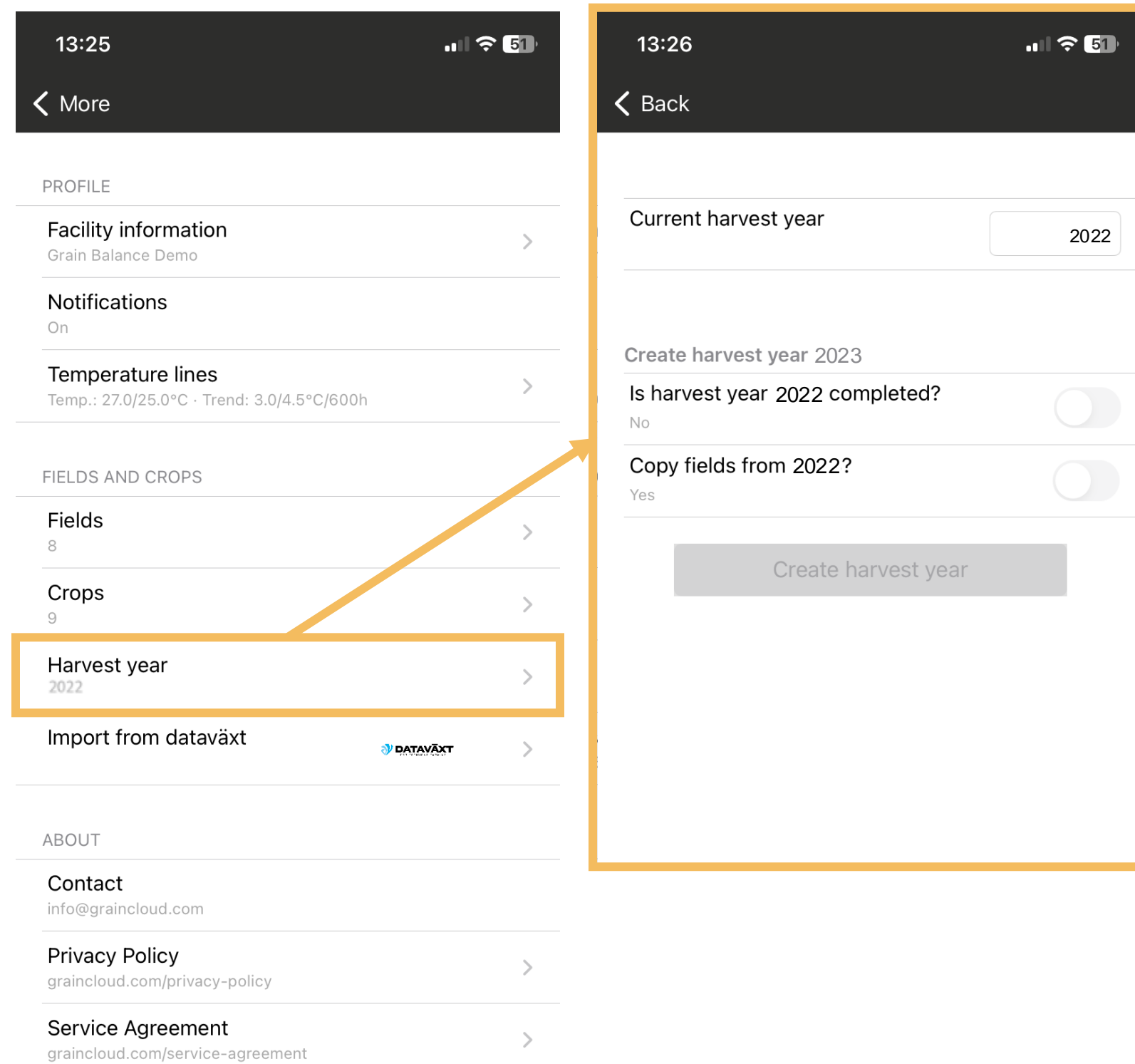
USER INSTRUCTIONS



# Change harvest year

Available from 15 June each year.

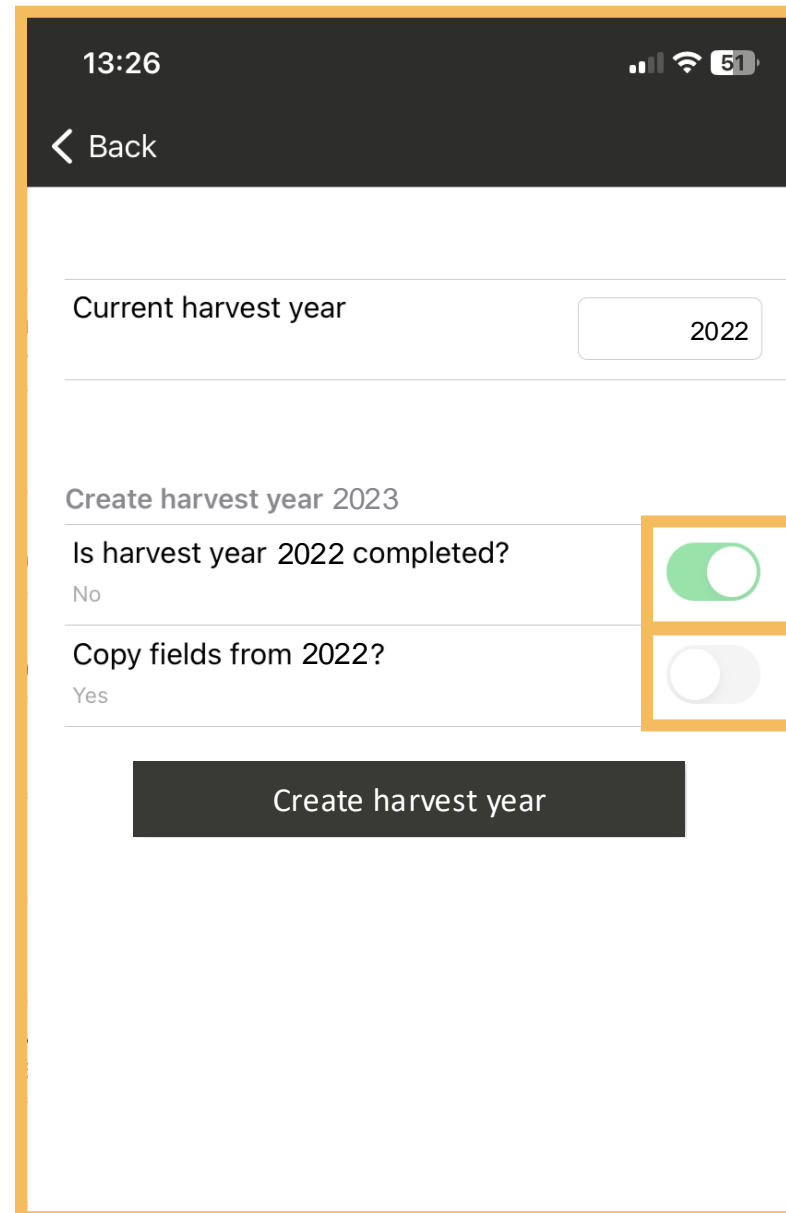
# Change harvest year



## INSTRUCTIONS

1. Click on Settings in Grain App.
2. Click on Harvest year.

# Change harvest year

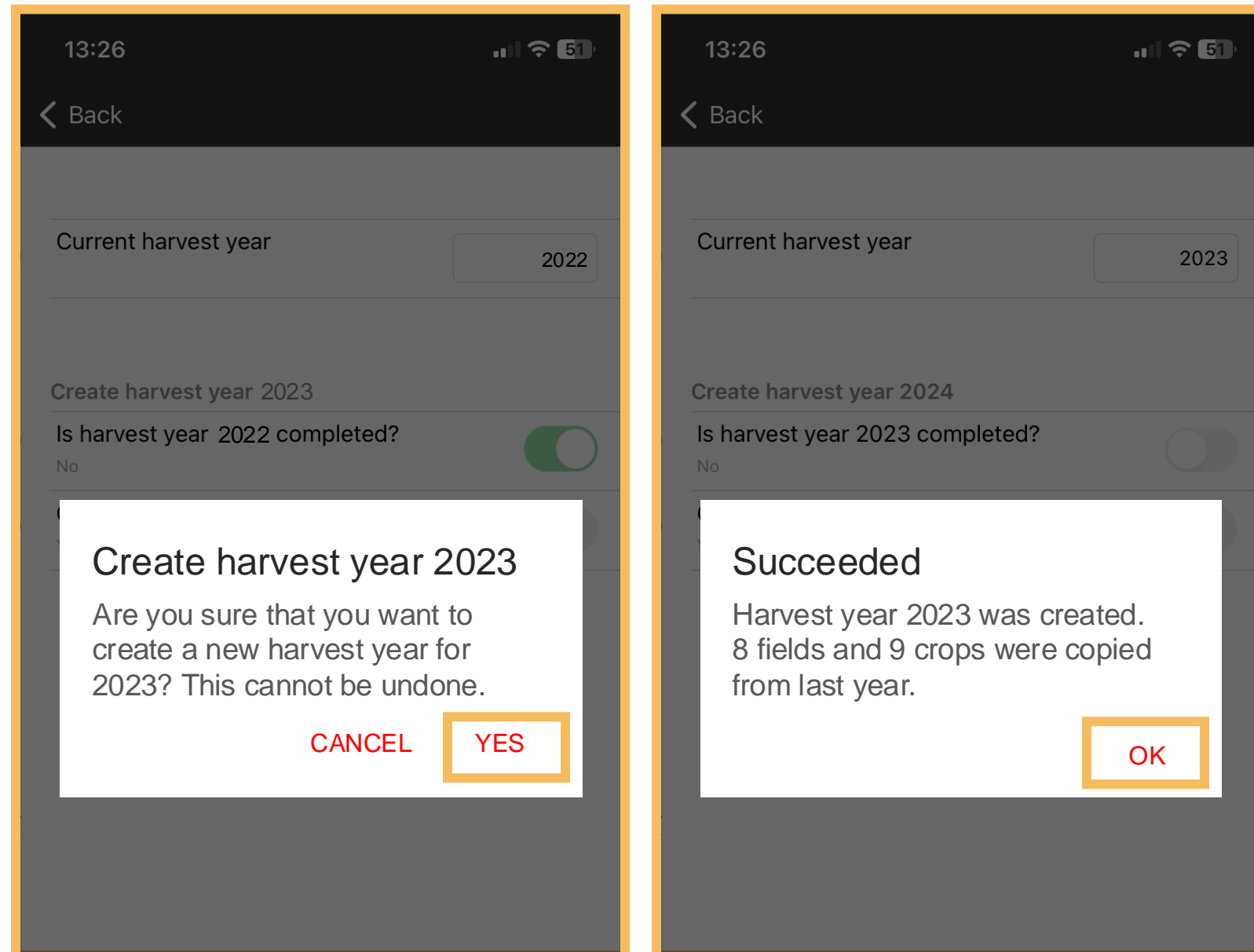


The screenshot shows a mobile app interface for changing the harvest year. At the top, the status bar displays the time 13:26, signal strength, Wi-Fi, and 51% battery. Below the status bar is a dark header with a back arrow and the text 'Back'. The main content area has a white background and is outlined in orange. It contains a text input field for 'Current harvest year' with the value '2022'. Below this is a section titled 'Create harvest year 2023' which includes two toggle switches: 'Is harvest year 2022 completed?' (set to 'No' and turned on) and 'Copy fields from 2022?' (set to 'Yes' and turned off). At the bottom of the form is a dark button labeled 'Create harvest year'.

## INSTRUCTIONS

3. Tick Yes to the first question.
4. Tick Yes to the second question if you want to copy over the fields from the current harvest year to the new harvest year. This is optional to choose.

# Change harvest year



## INSTRUCTIONS

5. Click Yes to confirm that you want to switch to a new harvest year. Once you press Yes, there is no undoing!
6. A message is displayed when the change of harvest year is successful.

### **Note!**

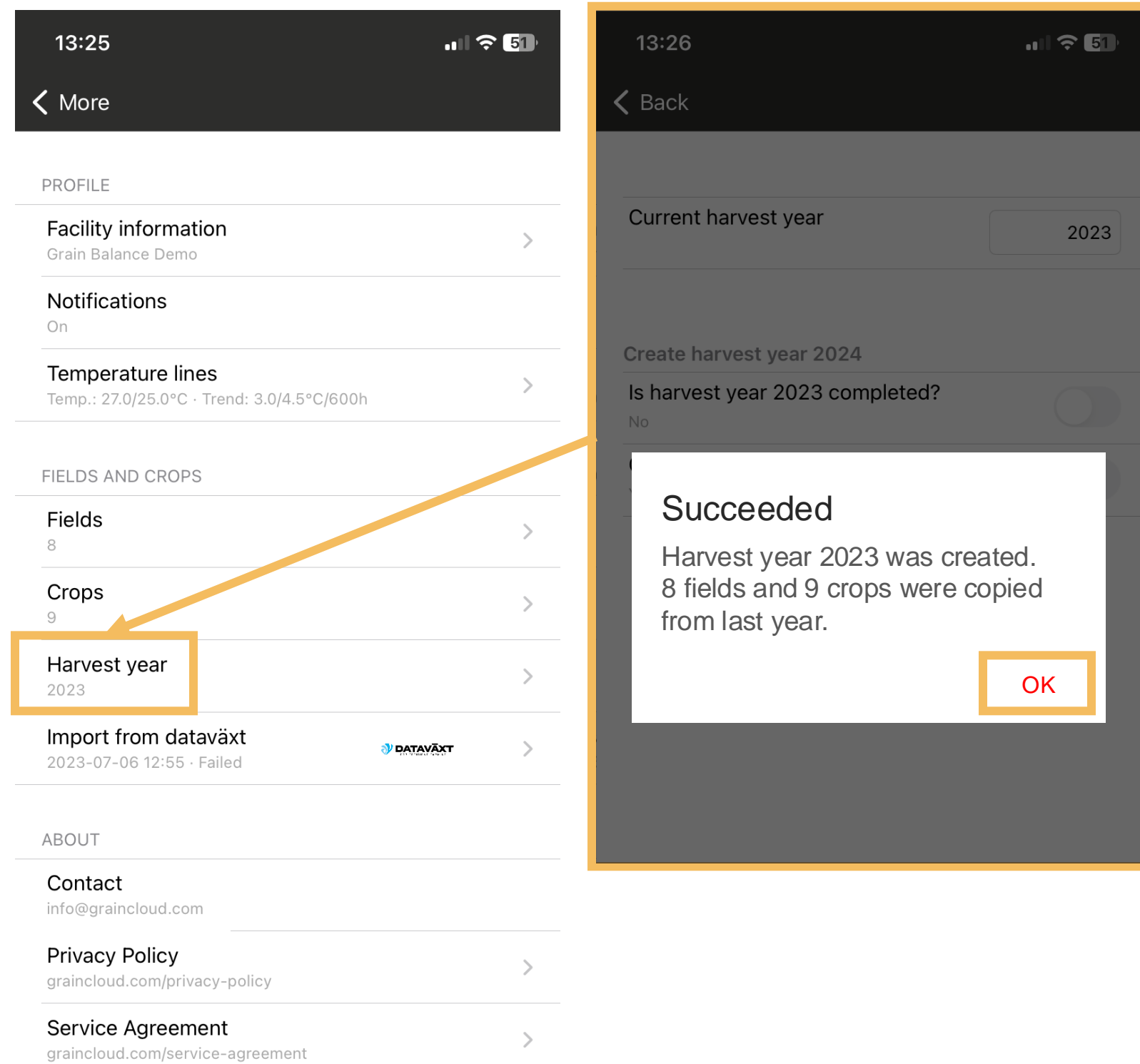
*Once you have pressed Yes to the question whether you want to create a new harvest year, there is no undoing!*

*The image shows how it looks in the text if you did select Yes to copy fields from the current harvest year to the new harvest year.*

# Change harvest year

## INSTRUCTIONS

- The new harvest year is displayed under Settings.



## **Best of luck!**

For further questions regarding the instructions or about Grain Cloud please contact us:

[info@graincloud.com](mailto:info@graincloud.com)

+46 512 79 70 00